

Ladysmith Business Park & Industrial Park

At Ladysmith Rd/Rt.639
Between Rt 95 & Rt 1
Ladysmith, VA

PAD SITES FOR SALE

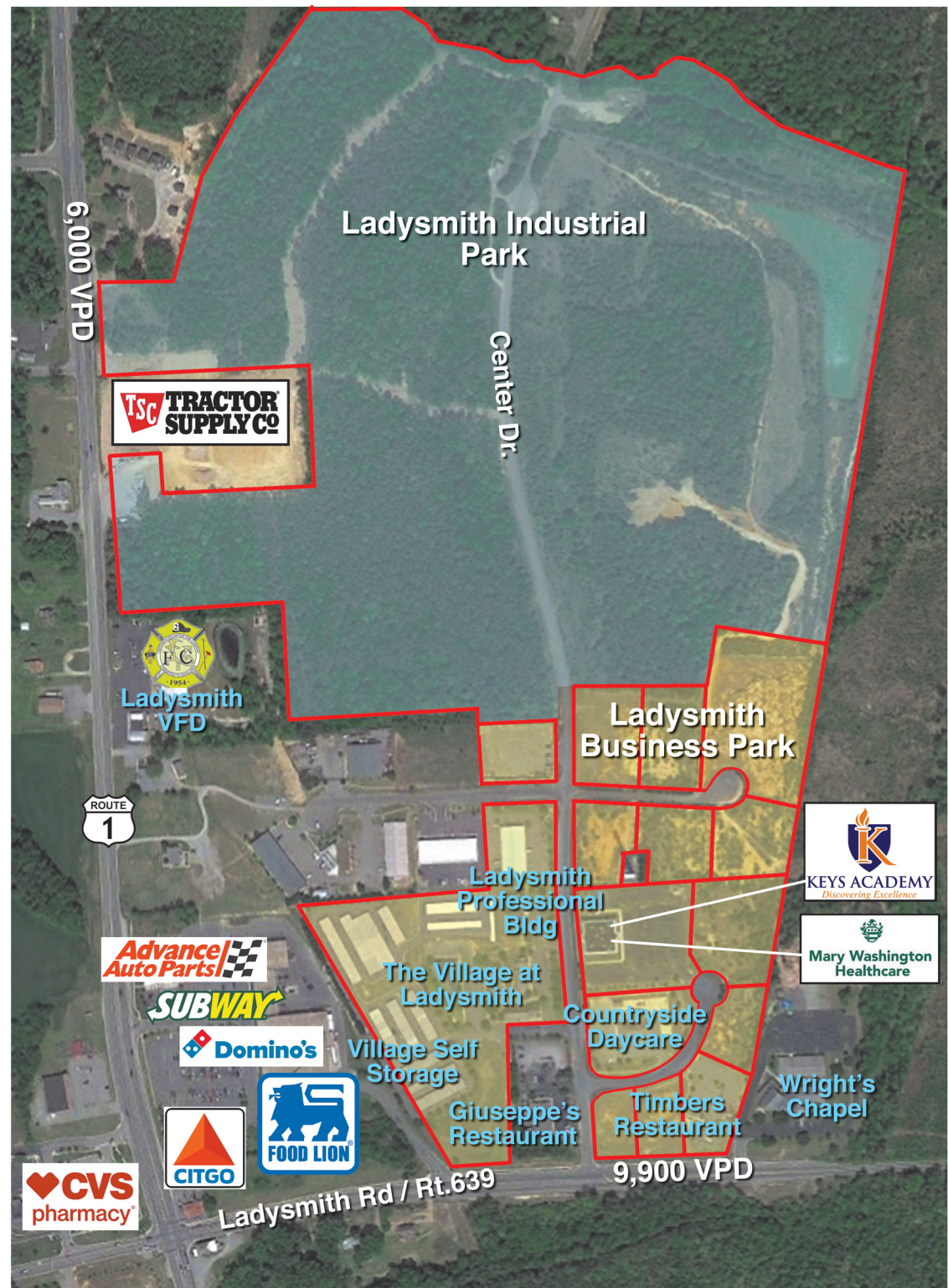
FOR ADDITIONAL INFORMATION,
PLEASE CONTACT:

Danny Carter
(804) 402-2814
drcarter@bealenet.com

Further details at
www.starmgt.com

Property Features

- **Business Park** lot sizes range from .5 acre to 3 acres, zoned B-1 Business
- **Industrial Park** 70+ acres lot sizes TBD
Zoned M-1 Light Commercial
- Roads built to lots
- Water/sewer & electrical in place
- Stormwater management in place
- < 5 minutes from US Interstate 95



Demographics	
Population	46,210
No. of Households	16,992
Avg. HH Income	\$72,550
Med. HH Income	\$60,571
Daytime Population	9,304

